

LOD IS LEVEL OF DETAILING AND THE LOD MODELS CREATES TO EFFECIENTLY MANAGE THE WORK FLOW

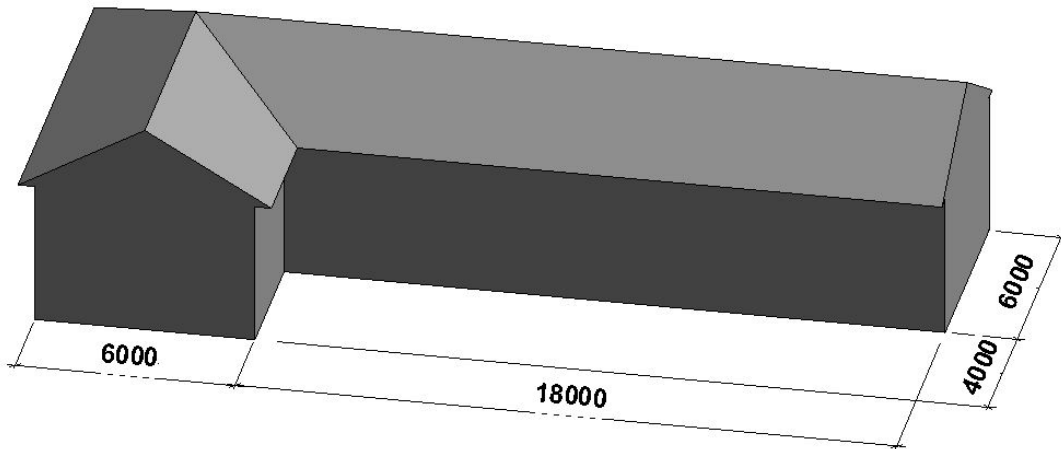
LOD 100	CONCEPT DESIGN
LOD 200	DESIGN DEVELOPMENT
LOD 300	FINAL DESIGN
LOD 400	CONSTRUCTION
LOD 500	BUILDING OPERATION

GENERAL INFO : STRUCTURAL, REBAR & REINFORCEMENT, ARCHITECTURAL, ID & FURNITURE. THESE ARE ALL SEPARATE CATEGORIES, BASED ON CLIENT REQUIREMENT & INPUT, WE CAN MODEL THE LEVEL OF DETAILING CATEGORYWISE.

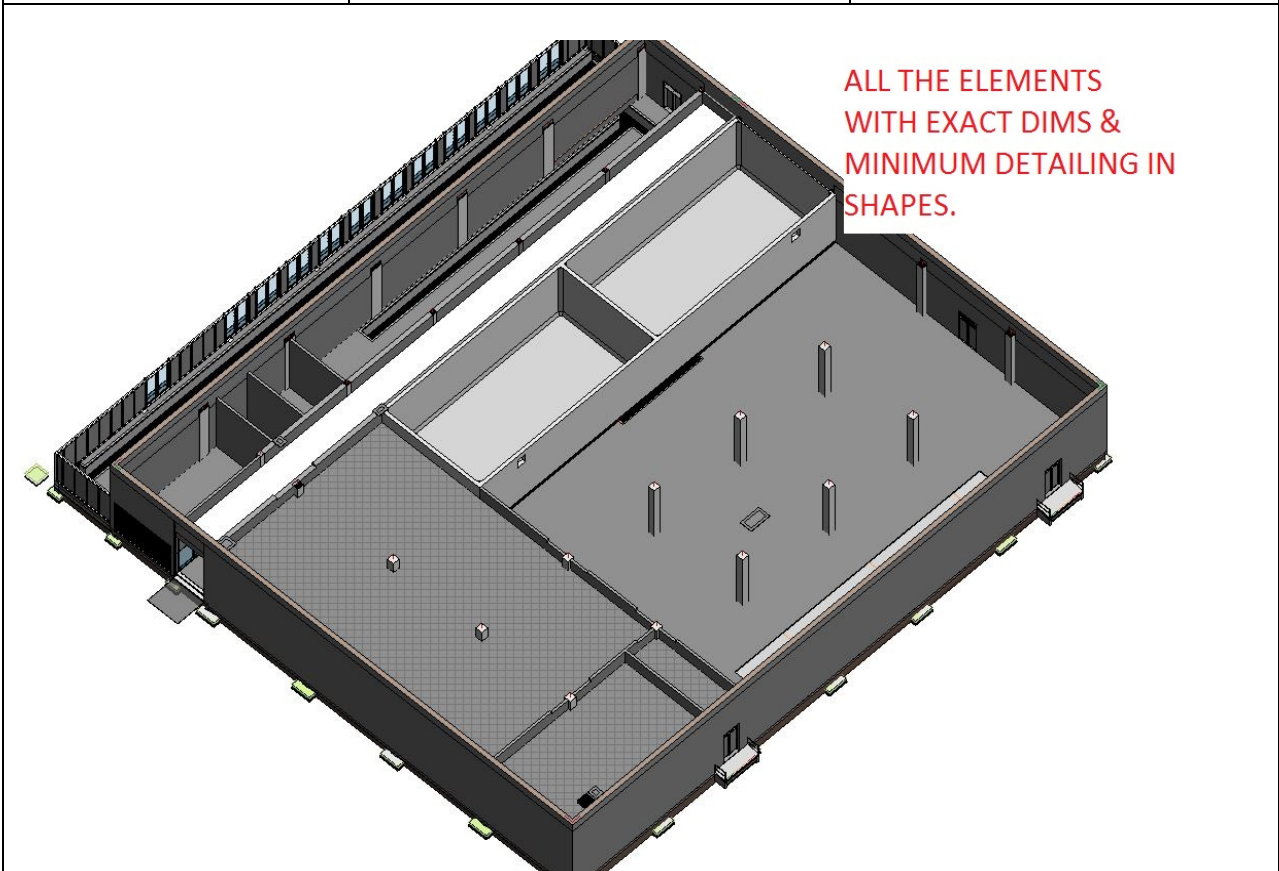
STRUCTURAL	Basic structural elements like foundations, piles, columns, beams, slabs, stairs & structural core walls etc.
ARCHITECTURAL	Walls, doors, windows, ceilings, floors, basic kitchen elements, Sanitary, Finishes, gutters & Roofs etc.
Furniture & ID	All the furniture elements like beds, chairs & other interior design elements.

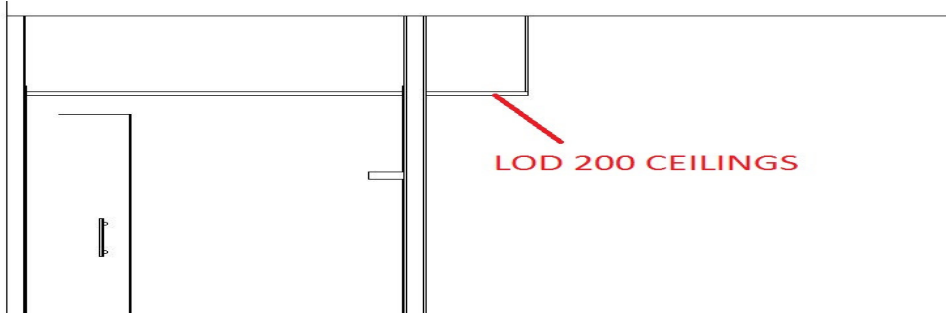
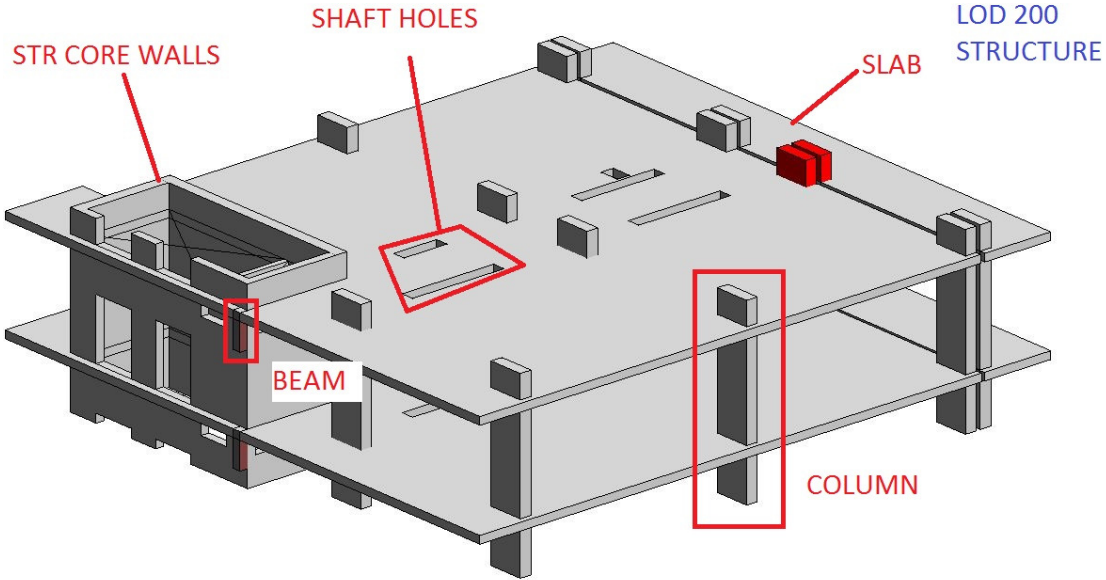
LOD 100

CONCEPT	DESCRIPTION	
Concept Design/Pre Design	Conceptual model creation. Parameters like area, height, volume, location and orientation are defined. Information can be conveyed with massing forms, written narratives, and 2D symbols.	LOD 100 Elements are not geometric representations. Building concept with outer dims



LOD 200		
CONCEPT	DESCRIPTION	
Design development	<p>Modeled elements have approximate relationships to quantities, size, location and orientation. Some information may still be conveyed with written narratives.</p> <p>Elements model with minimum detail like basic architectural elements Walls, Doors, Windows, stairs, sanitary, Ceilings, Kitchen elements with minimum detail & roof etc with exact size, orientation & Location.</p> <p>Model Basic structural elements, foundations, coulms, strcural walls & Beams with exact size location & orientation</p>	<p>LOD 200 elements must be considered approximate.</p> <p>Model with minimum detail (We will not model detail shapes of elements) And it containing all the elements with exact dims.</p>

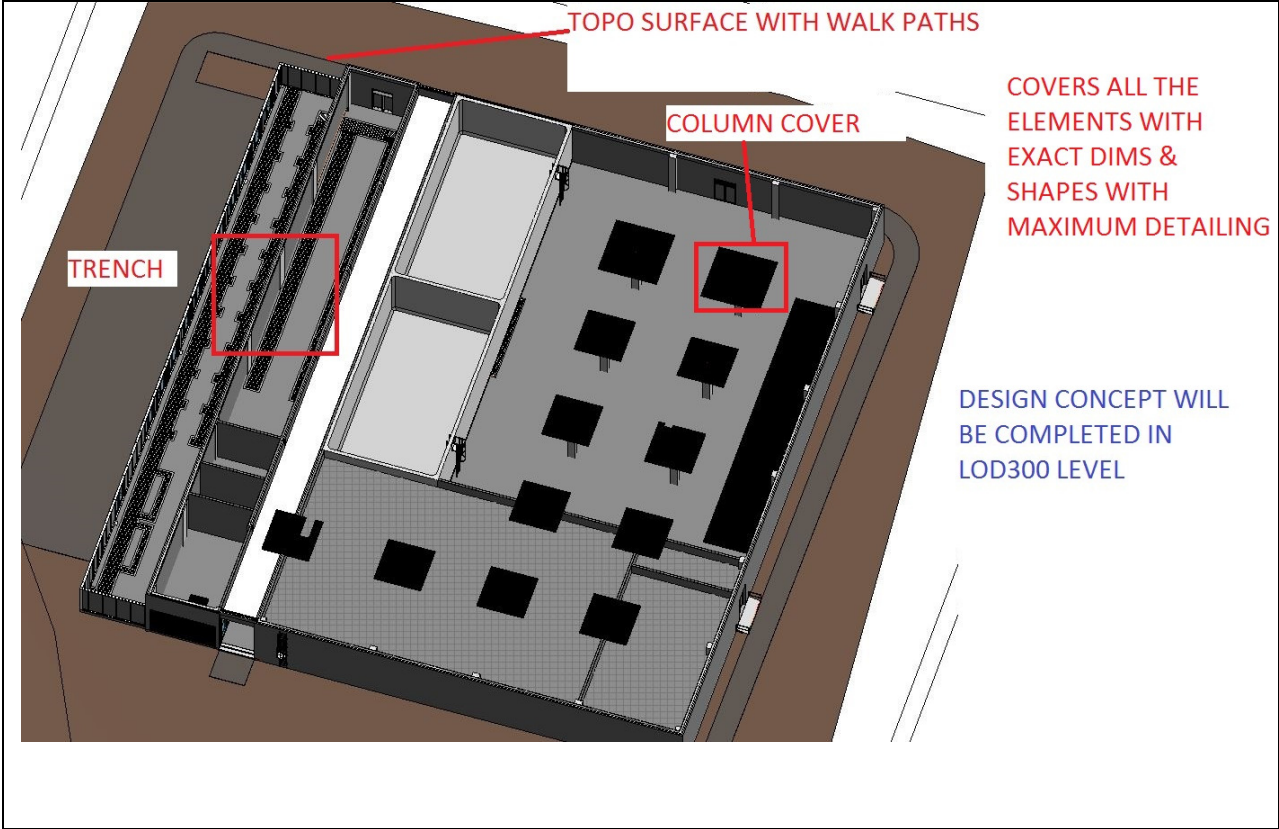




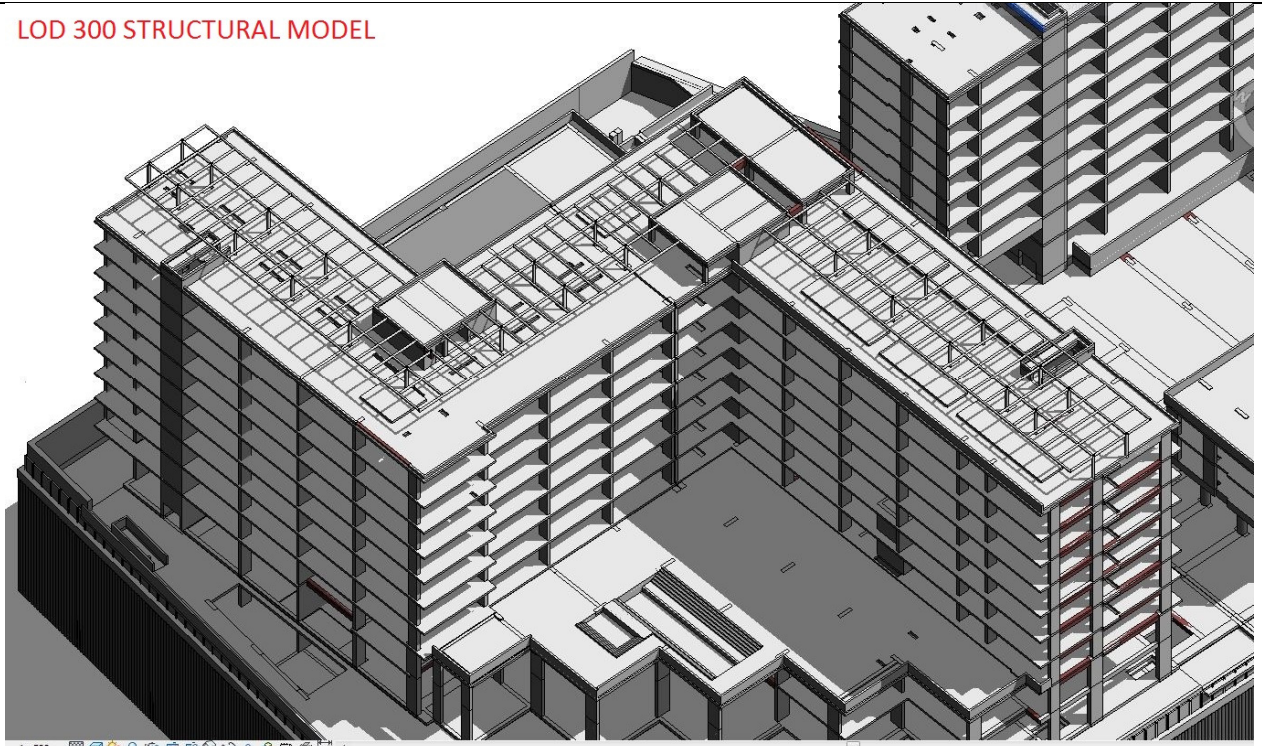
LOD 200 STRUCTURAL MODEL



LOD 300		
CONCEPT	DESCRIPTION	
Final design	<p>Accurate modeling, Elements defined with specific assemblies, precise quantity, size, shape, location and orientation.</p> <p>Elements model with maximum detail for all the architectural elements like finished walls, Railings, Bulk head ceilings, sanitary, wall, door accessories kitchen elements with full details & Areas.</p> <p>Elements model with maximum details like stair raiser count exact landing position, shape of beam, column cap and model detailed elements with supplied info including steel structures.</p>	<p>The project origin is defined and the element is located accurately with respect to the project origin.</p> <p>Need to model the maximum possible shapes in revit. Design concept will be completed in lod300 level.</p>



LOD 300 STRUCTURAL MODEL

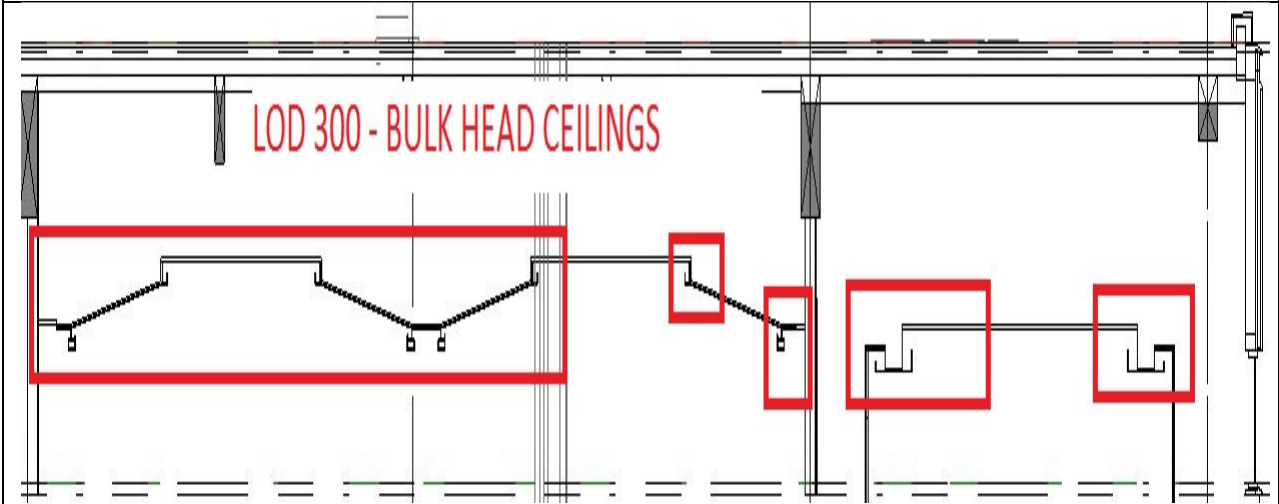


1:500

LOD 300 - ARCH PLAN MODEL WITH FULL DETAILS

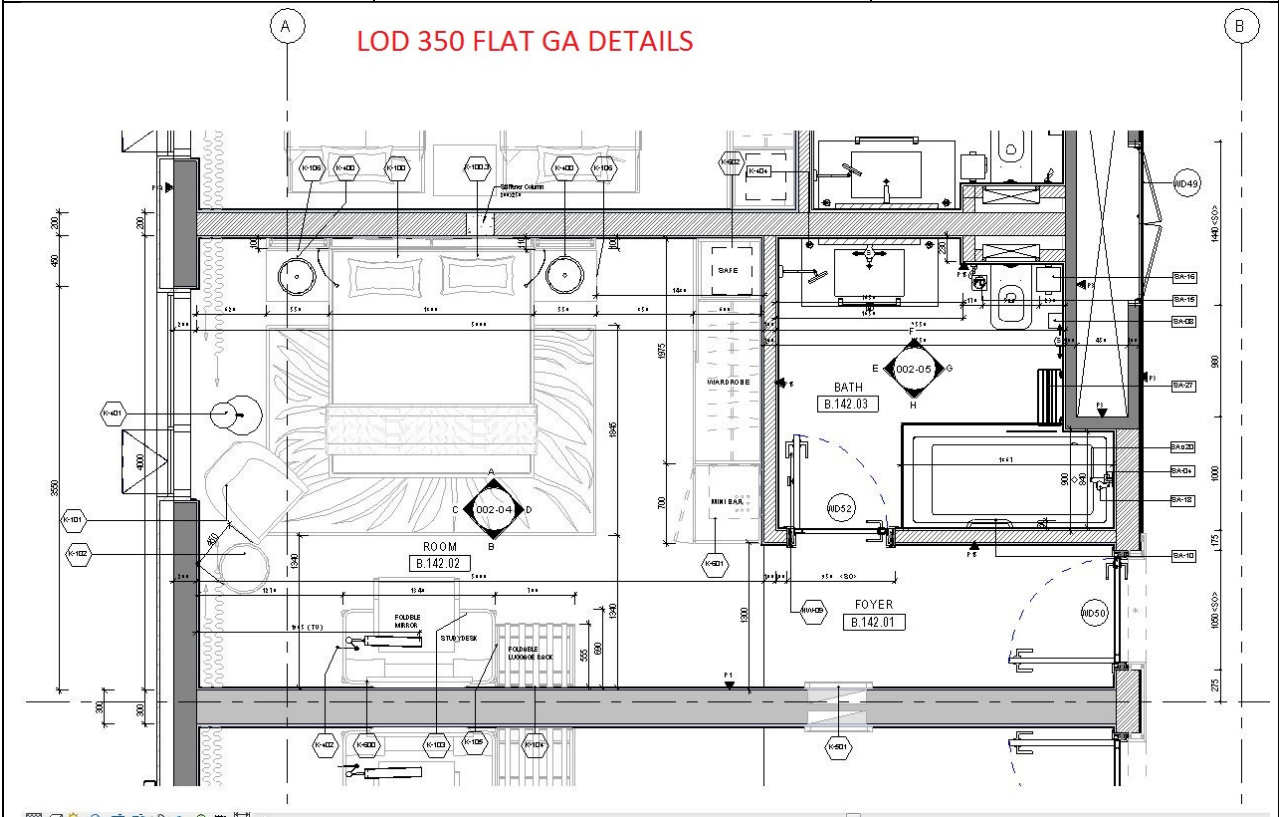


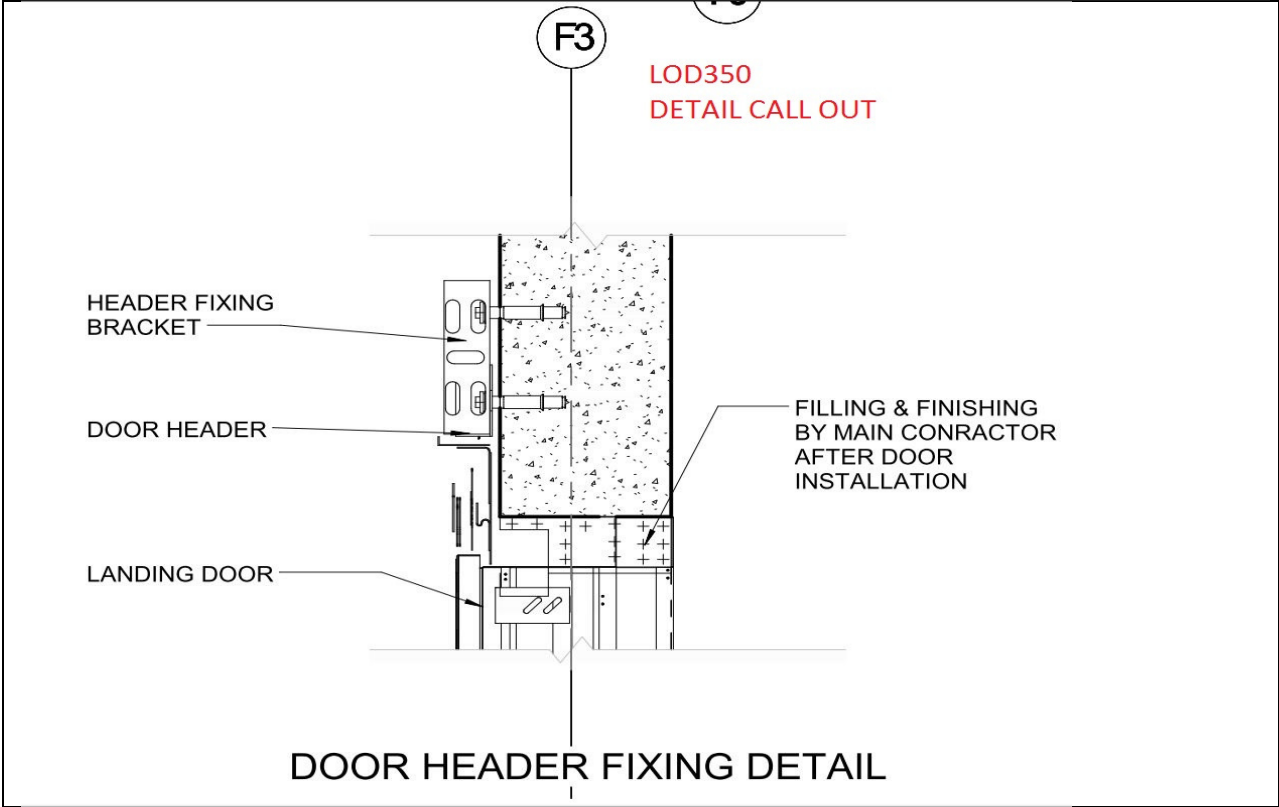
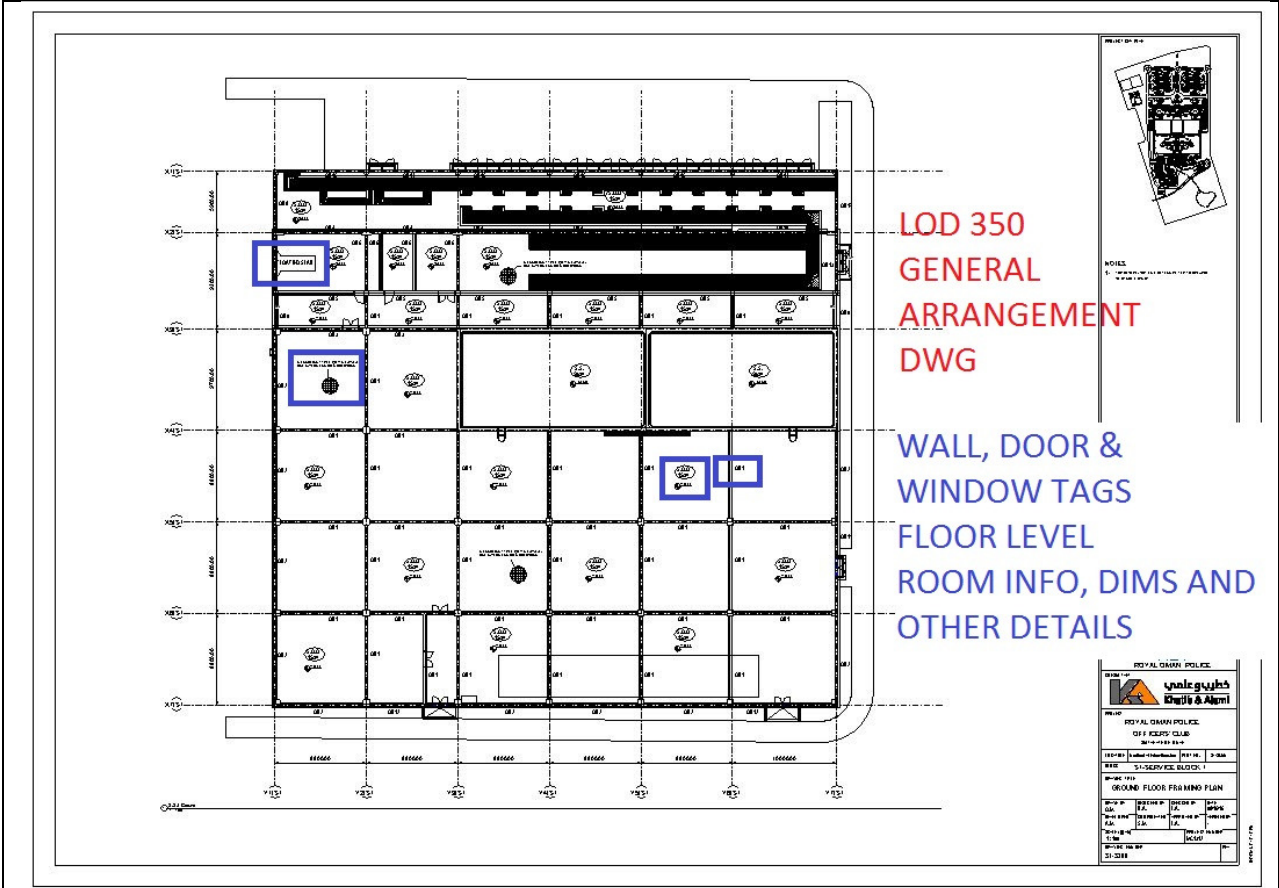
Main Model



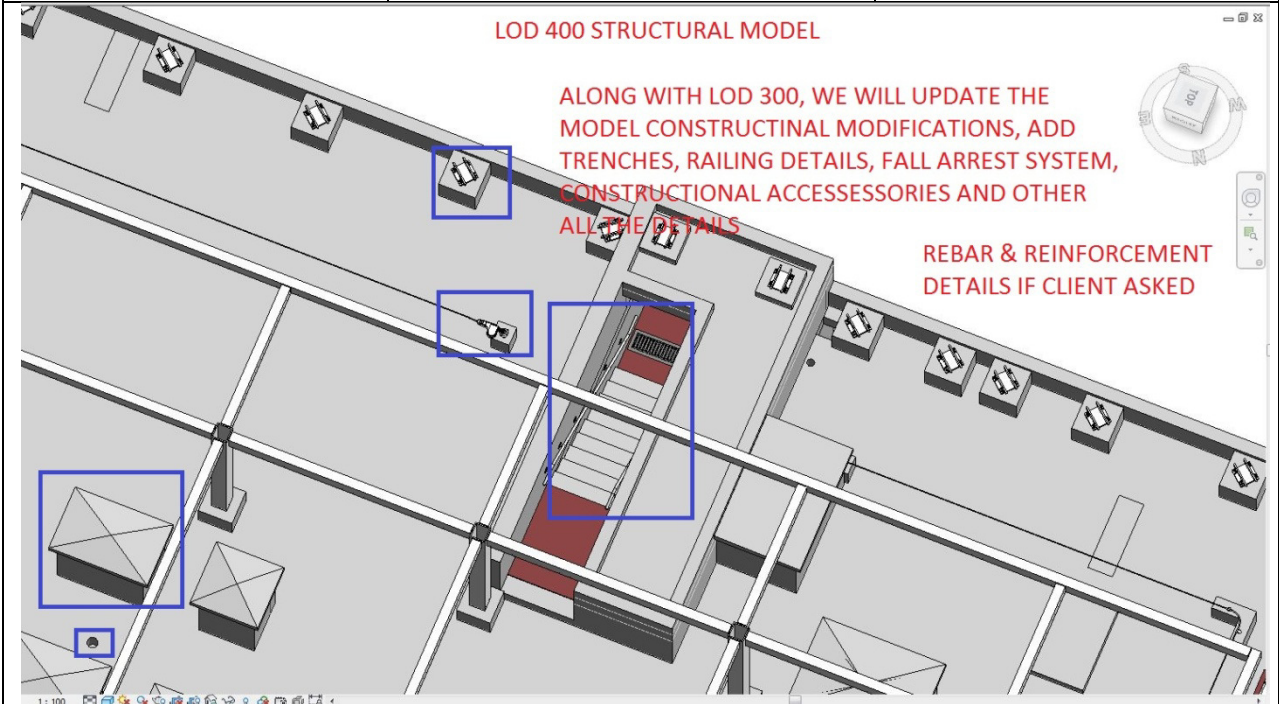
LOD 350

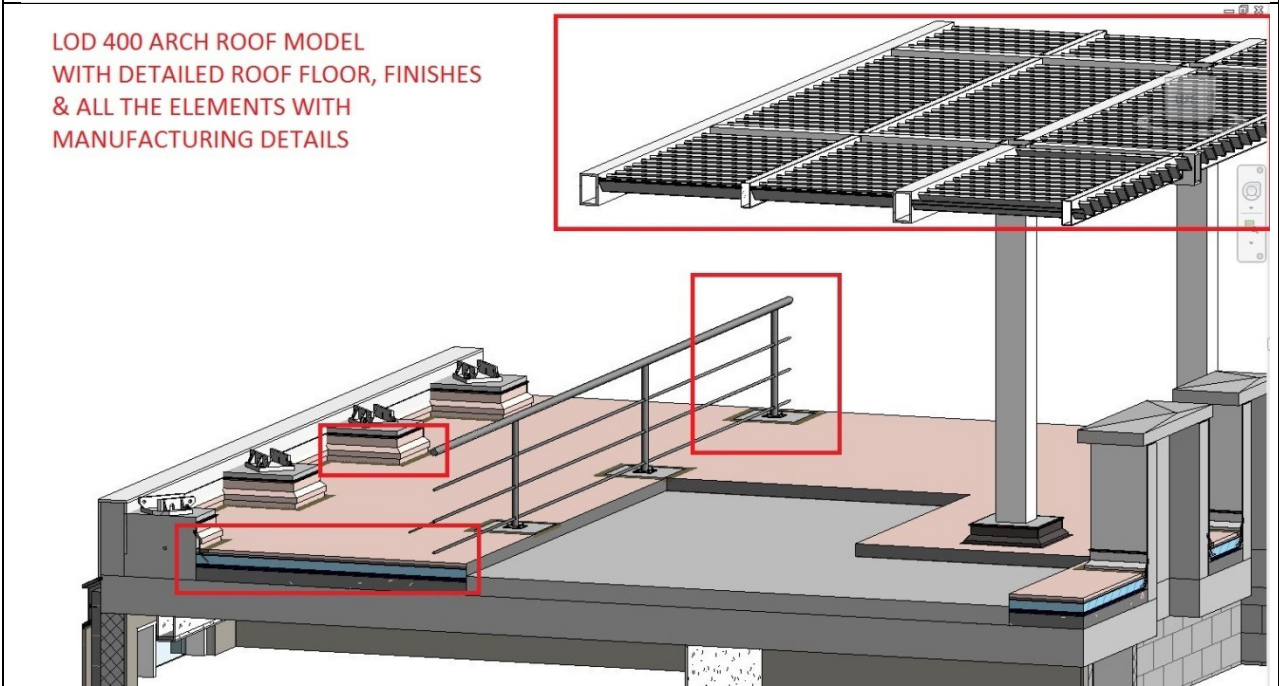
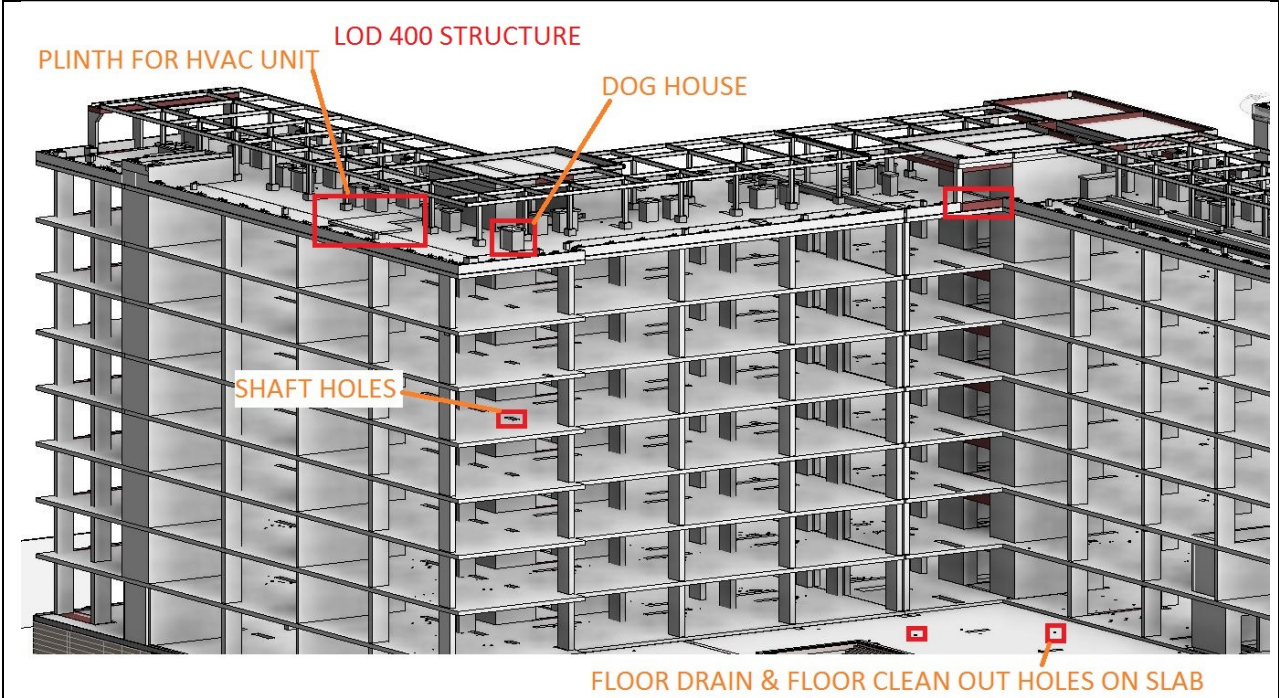
CONCEPT	DESCRIPTION	
<p>Construction / design documentation</p>	<p>Model detail and element that represent how building elements interface with various systems and other building elements with graphics and written definitions</p> <p>Parts necessary for coordination of the element with nearby or attached elements are modeled. These parts will include such items as supports and connections.</p> <p>Documentation for the designed elements like general arrangement drawings, sectional details, tags, call outs & preparation of sheets & schedules</p>	<p>Create general arrangement drawings, Prepare sectional elevations with using callouts & detailing families to represent exact shapes of elements which is not possible to model as a 3d element.</p> <p>Preparation of schedules, quantity, legends and other detailed notes</p>





LOD400	
CONCEPT	DESCRIPTION
CONSTRUCTION	<p>Continuation of LOD 300 with enough information added to facilitate fabrication, assembly, and installation.</p> <p>LOD 400 element is modeled at sufficient detail and accuracy for fabrication of the represented component.</p> <p>Rebar & Reinforcement details (Optional as per client requirement)</p> <p>Finishes details for all the architectural elements, Manufacturer details to the families with material details.</p> <p>Update the models with necessary modifications with final construction documents.</p>







LOD 400 SUITE



LOD 400 BED ROOM

LOD 400 BATH ROOM



Architecture Structure Systems Insert Annotate Analyze Missing & Site Collaborate View Manage Add-Ins Modify Modify Schedule/Quantities

Categories: Parameters Unit Format Calculated Insert Delete Resize Hide Unhide All Insert Data Row Delete Resize Merge Insert Clear Group Ungroup Shading Borders Reset Font Align Horizontal Align Vertical Highlight in Model

Properties

et Browser - HH-ZONE A-01-ARC-MD3-2... X

Schedule

Schedule: B1-Door Qu Edit Type

Identify Data View Template View Name: B1-Door Quantities Dependency: Independent Worksheet View Schedule...

Edited by: jse930

Phasing: Phase Filter Show All Phase New Construct...

Other Fields Filter Sorting/Grouping Formatting Appearance

<B1-Door Quantities>												
A	B	C	D	E	F	G	H	I	J	K	L	
Level	Type Mark	Fire Rating	Width	Height	DDC_CODE	DDC_HAREWAR	DDC_LOCATION	DDC_PRODUCT REFERENCE	DDC_SUPPLIER / DISTRIBU	DDC_DESCRIPTION	DDC_ITEM	
BASEMENT 01	027C	none	1000.000	2200.000	027C	HW-17 ITEM R	HK OFFICE_PUR	REF 3824-S24-OPT 2	Bin Gurar Trading LLC	SINGLE LEAF	SINGLE LEAF S	
BASEMENT 01	027C	none	1000.000	2200.000	027C	HW-17 ITEM R	HK OFFICE_PUR	REF 3824-S24-OPT 2	Bin Gurar Trading LLC	SINGLE LEAF	SINGLE LEAF S	
BASEMENT 01	027C	none	1000.000	2200.000	027C	HW-17 ITEM R	HK OFFICE_PUR	REF 3824-S24-OPT 2	Bin Gurar Trading LLC	SINGLE LEAF	SINGLE LEAF S	
BASEMENT 01	027C	none	1000.000	2200.000	027C	HW-17 ITEM R	HK OFFICE_PUR	REF 3824-S24-OPT 2	Bin Gurar Trading LLC	SINGLE LEAF	SINGLE LEAF S	
BASEMENT 01	027C	none	1000.000	2200.000	027C	HW-17 ITEM R	HK OFFICE_PUR	REF 3824-S24-OPT 2	Bin Gurar Trading LLC	SINGLE LEAF	SINGLE LEAF S	
BASEMENT 01	027C	none	1000.000	2200.000	027C	HW-17 ITEM R	HK OFFICE_PUR	REF 3824-S24-OPT 2	Bin Gurar Trading LLC	SINGLE LEAF	SINGLE LEAF S	
BASEMENT 01	027E	none	1000.000	2200.000	027E	HW-17 ITEM R	HOUSE KEEPING	REF 3824-S24-OPT 2	Bin Gurar Trading LLC	SINGLE LEAF	SINGLE LEAF S	
BASEMENT 01	027E	none	1000.000	2200.000	027E	HW-17 ITEM R	HOUSE KEEPING	REF 3824-S24-OPT 2	Bin Gurar Trading LLC	SINGLE LEAF	SINGLE LEAF S	
BASEMENT 01	027E	none	1000.000	2200.000	027E	HW-17 ITEM R	HOUSE KEEPING	REF 3824-S24-OPT 2	Bin Gurar Trading LLC	SINGLE LEAF	SINGLE LEAF S	
027E_3												
Other	D40	1 hr (60mins)	1200.000	2200.000	D40	CYLINDER CO	LANFOR	(SDC REF. 3824-S24-OPT 2)	Bin Gurar Trading LLC	DOUBLE LEA	DOUBLE LEAF	
D40_1												
Grand total:	11											

Schedules of elements with manufacturing details